

# AMRIT HEIGHTS - II



RETREAT TO TREAT YOUR EMOTIONS

Contact: +91 96519 91213, 91299 91213

E-mail: [info@amritplanners.com](mailto:info@amritplanners.com) | Website: [www.amritplanners.com](http://www.amritplanners.com)

Add: Amrit Planners Pvt. Ltd., Eldeco Elegant Tower, 4th Floor, Vibhuti Khand, Gomti Nagar, Lucknow, U.P. - 226010

UPRERAPRJ376812/07/2024



## EPITOME OF THE *Lavish Living*

3 BHK / 3 BHK + SERVANT APARTMENTS



# About Us

## Welcome to Amrit Heights II

an epitome of modern living brought to you by Amrit Planners Pvt. Ltd. Our project features exquisite 3 BHK and 3 BHK + Servant apartments, designed to offer the perfect blend of luxury and comfort. At Amrit Planners, we are committed to creating residential spaces that provide an unparalleled living experience.

**Amrit Planners** is a name synonymous with quality and trust in the real estate industry. With a rich legacy of delivering exceptional projects, we strive to set new benchmarks in urban living. Our team of skilled architects, engineers, and designers work tirelessly to ensure that every project we undertake is a masterpiece in itself.

Amrit Heights-II is not just a residential complex; it's a community where you can experience the joy of contemporary living. Our meticulously planned apartments come with state-of-the-art amenities and are designed to cater to your every need. Whether it's the spacious interiors, the serene surroundings, or the thoughtful amenities, every aspect of Amrit Heights-II reflects our commitment to excellence.

Join us at Amrit Heights-II and be a part of a vibrant community that celebrates the essence of fine living. Discover the difference with Amrit Planners, where your dream home becomes a reality.



BEDROOM



LIVING ROOM



BATHROOM

# LAYOUTS

## UNIT NO. 3 & 4 3 BHK + 3T T-2

Rera Carpet Area  
933.93 sq.ft.

Built Up Area  
(including balcony)  
1170.23 sq.ft.

Super Area  
1521.3 sq.ft.



## UNIT NO. 2 & 5 3 BHK + 3T T-1

Rera Carpet Area  
903.72 sq.ft.

Built Up Area  
(including balcony)  
1137.77 sq.ft.

Super Area  
1480 sq.ft.



## UNIT NO. 1 & 6 3 BHK + 3T + SERVANT

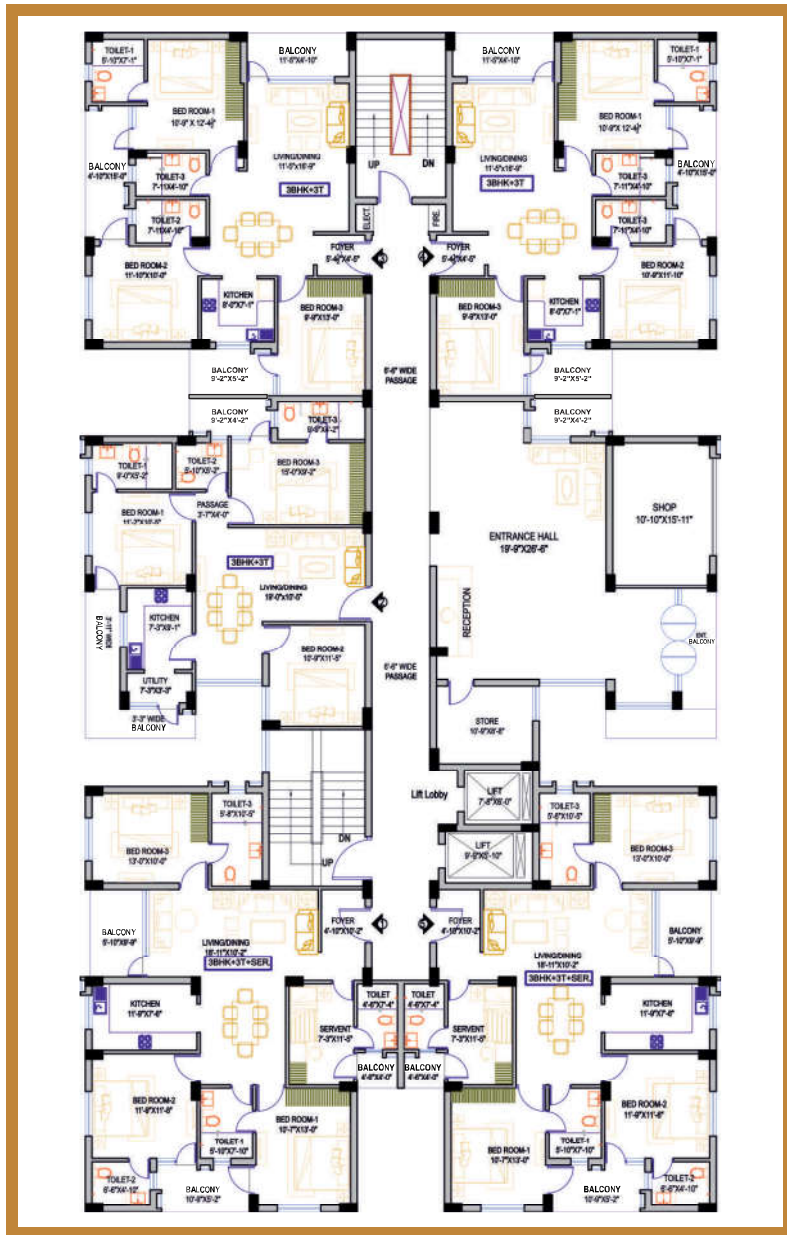
Rera Carpet Area  
1168.85 sq.ft.

Built Up Area  
(including balcony)  
1427.24 sq.ft.

Super Area  
1855.5 sq.ft.



# TYPICAL FLOOR PLANS



GROUND FLOOR PLAN



1 + 13 FLOOR

# PROJECT SPECIFICATION



## EXTERNAL FINISH

Weather proof paint



## STRUCTURE DESIGN

Earthquake Resistance RCC frame structure



## DRAWING & DINING ROOM

- Floor** : Vitrified tiles
- Walls** : Plastered and painted with pleasing shade of OBD (Oil Bound Distemper)
- Ceiling** : OBD



## BEDROOM

- Floor** : Vitrified tiles
- Walls** : Plastered and painted with pleasing shade of OBD (Oil Bound Distemper)
- Ceiling** : OBD



## KITCHEN

- Floor** : Anti-skid tiles
- Platform** : Pre-polished marble stone/Granite with stainless steel sink
- Walls/Dado** : Ceramic tiles up to 2 two feet above kitchen platform, OBD paint
- Fittings** : CP fittings with mixer provision for RO system
- Water supply** : Provision for Hot and Cold water supply



## BALCONIES

- Floor** : Anti-skid tiles



## BATHROOM

- Floor** : Anti-skid tiles
- Walls** : Glazed ceramic tiles
- Ceiling** : False Ceiling
- Fitting & Fixture** : Standard WC, Wash Basin, provision of hot and cold water supply.



## STAIRCASE & COMMON PASSAGE

- Floor** : Combination of Marble stone & vitrified tiles
- Walls** : Plastered and painted with pleasing shade of OBD (Oil Bound Distemper)
- Ceiling** : OBD



## DOORS AND WINDOWS

- Entrance Door** : Hardwood frame  
Wooden panelled shutter duly polished
- Internal Door** : Hardwood frame  
Skin moulded shutter duly polished
- Windows** : Wooden panelled shutter duly polished/PVC windows



## ELECTRICAL

- Point Wiring** : Copper Concealed wiring in all rooms sufficient light points, fan points, 6/15 A sockets A.C. points in living / dining, bedrooms, provision for TV etc.
- Switches** : Modular switches
- Fan** : Fan in living / dining room
- Lights** : Light fittings



## SECURITY SYSTEM

Gated community, CCTV, Fire Fighting System, Intercom



## ELEVATOR (LIFT)

Lift

# AMENITIES

- 🏠 High-rise Living
- 🏋️ Gym
- 🌳 Jogging Park
- 👶 Kids Zone
- 🏊 Swimming pool



# FACILITIES IN CLOSE PROXIMITY

- \* World class golf course
- \* Next door shopping complex & malls
- \* Quality national & international reputed school / college
- \* Best price - Walmart store operational
- \* Super speciality world class Indian brand hospital with all cares and facility nearing completion next door
- \* Operational spiritual center - ISKCON

# LOCATION MAP

The Integral part of the project ensure that the interactive hotspot such as Health Centers, Education Institutions, Entertainment Hubs, and Shopping Destinations are just at the minimal distance from you.

Planning and execution of flawless expertise is fueled with efforts so that your dream home has everything which is efficient and rewarding in bringing satisfaction to your every day life.



# DISTANCE FROM THE PROJECT

**200 mt.** - From Jaipuria School | **300 mt.** - From CMS School | **500 mt.** - From Cancer Institute | **800 mt.** - From Iskon Temple | **1 km.** - From Golf Course | **1.2 km.** - From Lulu Mall | **2.5 km.** - From Medanta Super Speciality Hospital | **5 km.** - From Gomti Nagar | **9 km.** - From Hazratganj | **11 km.** - From International Airport